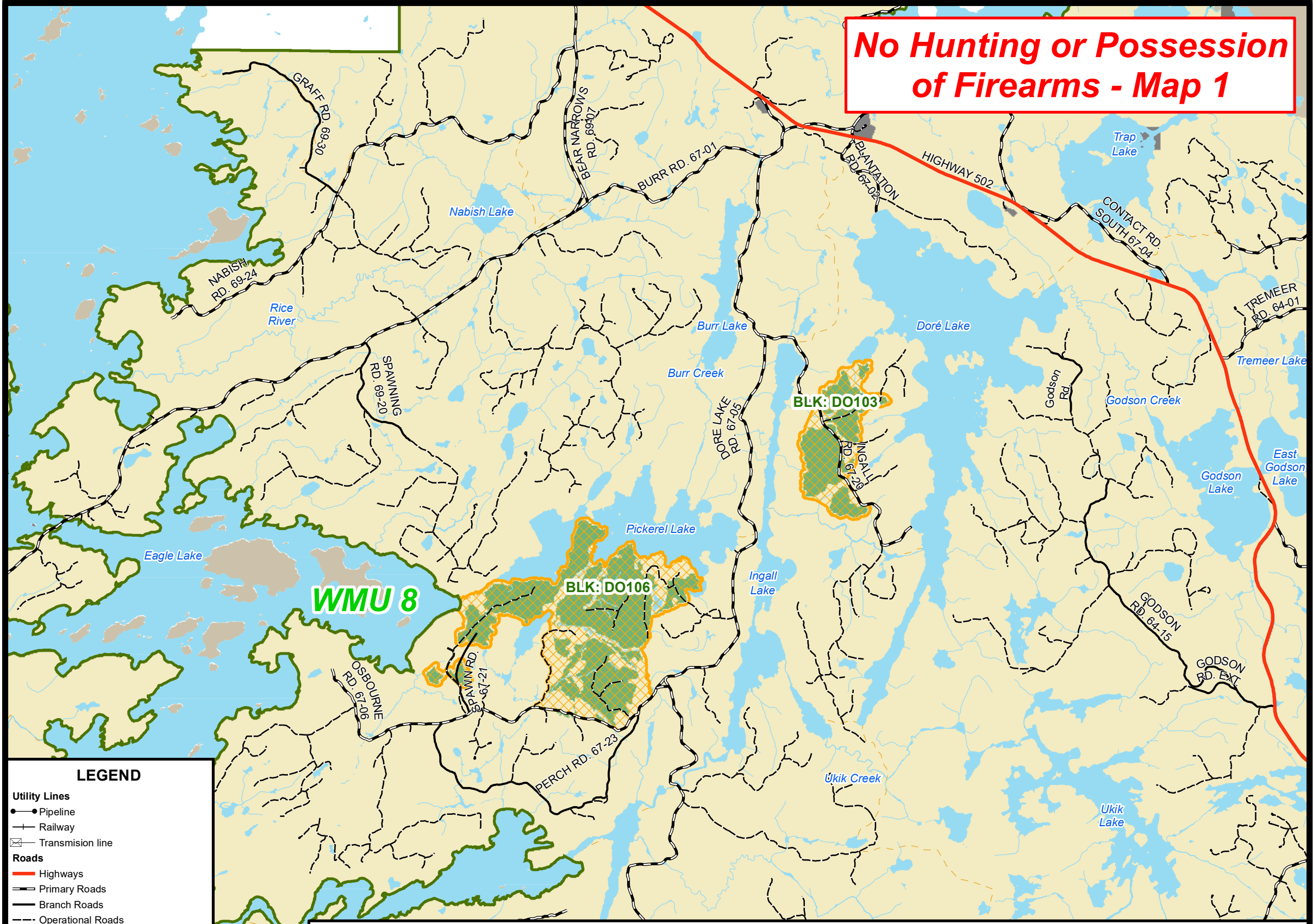


No Hunting or Possession of Firearms - Map 1



LEGEND

Utility Lines

- Pipeline
- Railway
- Transmission line

Roads

- Highways
- Primary Roads
- Branch Roads
- Operational Roads
- Recreation Trails & Canoe Routes
- No Hunting or Possession of Firearms

Wildlife Management Units

- Streams
- Lakes & Rivers
- First Nations Reserves
- Patent Land
- Parks and Conservation Reserves
- 2024 Harvest Areas
- Wabigoon Forest Boundary

DISCLAIMER:
 This map should not be relied upon as a precise indicator of routes, as a guide to navigation, to establish legal title, boundary lines or locations of improvements. Dryden Fibre Canada ULC and the Ontario Ministry of Natural Resources shall not be liable in any way for the use of, or reliance upon, this map or any information on this map.

NOTES:
 Planimetric Base Features maintained and provided by the Ontario Ministry of Natural Resources (MNR, July 2017, Forest Information Manual. Toronto: Queen's Printer of Ontario). Transportation and Forest Resources information are from Dryden Fibre Canada ULC company files.

© King's Printer for Ontario 2024
 © Dryden Fibre Canada ULC 2024

AREAS WILL BE CLOSED DURING ACTIVE OPERATIONS ONLY



Wabigoon Forest

ATTENTION HUNTERS
NO HUNTING OR POSSESSION OF FIREARMS AREAS 2024
 Please Observe and Obey All Signs
 Cross-hatched Areas in Dryden District
CLOSED DURING ACTIVE OPERATIONS ONLY

ONTARIO GOVERNMENT NOTICE:
 Closures are in effect during the open rifle season (moose / deer) for the respective Wildlife Management Unit during active operations only.

FIREARMS MUST BE ENCASED WHEN TRAVELING THROUGH CROSS-HATCHED AREAS WHEN SIGNS ARE PRESENT

The areas will be clearly signed and hunters are required to obey these signs.

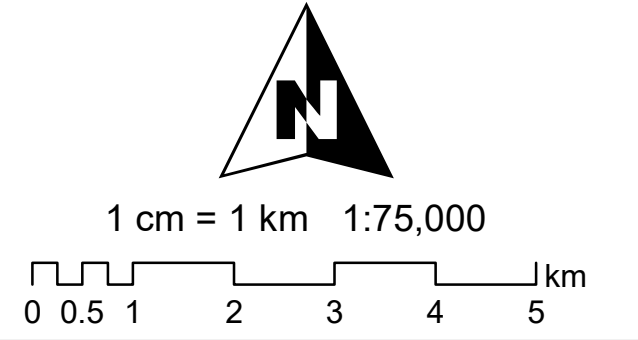
Maps showing potentially closed areas will be available for viewing in the M.N.R. office in Dryden and at major issuers of hunting licenses in the Dryden area as well as at the Dryden Fibre Canada Gatehouse.

All closures are made under the authority of Subsection 10(2) of the Fish and Wildlife Conservation Act, R.S.O. 1997, Chapter 41, for the purposes of safety of woods workers.

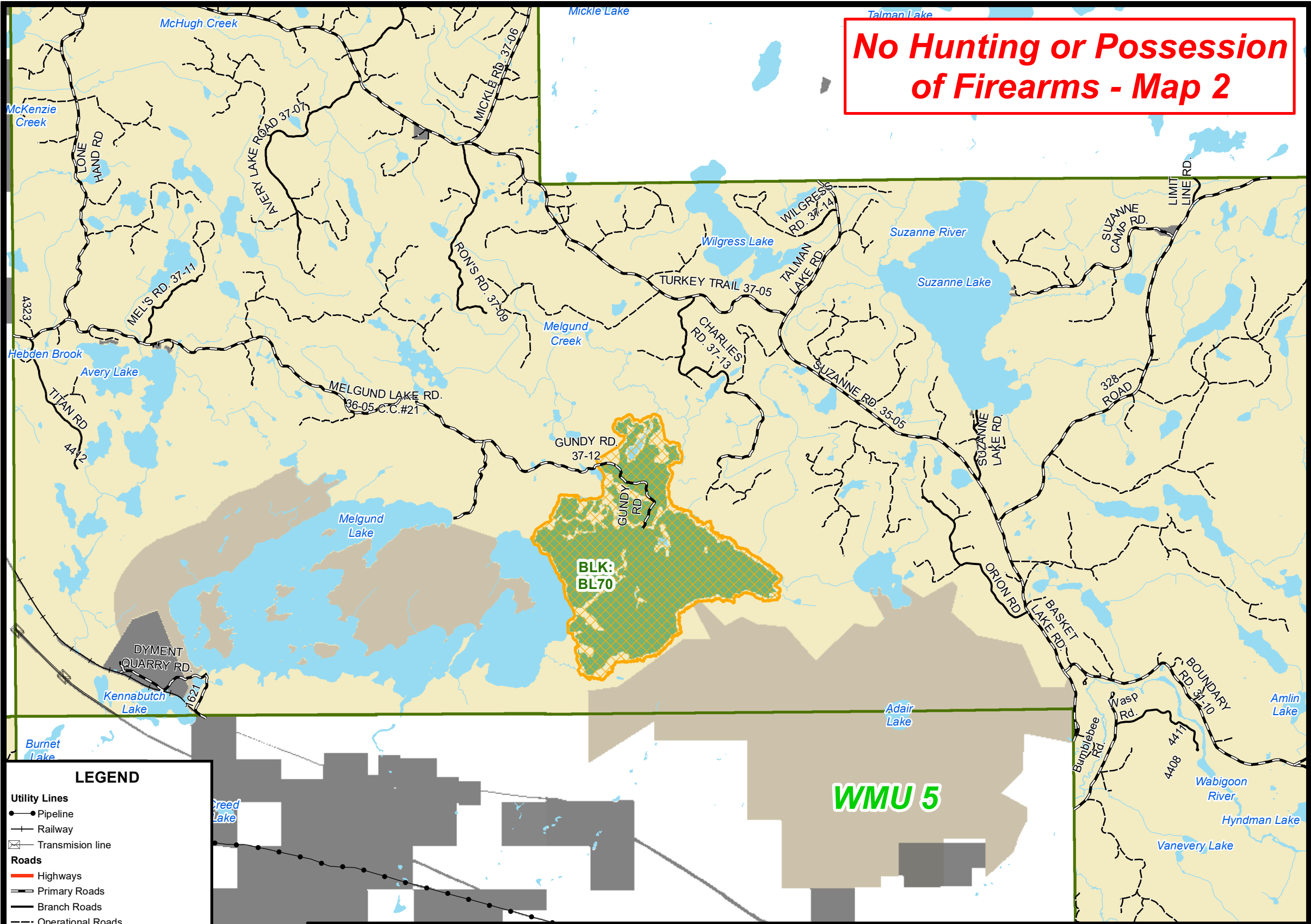
This map is not intended for navigational use

FOR FURTHER INFORMATION CONTACT:

Rob Hoedl Operations Coordinator Dryden Fibre Canada P.O. Box 3001 Dryden, ON P8N 2Z7 Phone (807) 323-3427	Lyla Soley Management Forester Dryden Fibre Canada P.O. Box 3001 Dryden, ON P8N 2Z7 Phone (807) 323-3303
---	---



No Hunting or Possession of Firearms - Map 2



LEGEND

Utility Lines

- Pipeline
- Railway
- Transmission line

Roads

- Highways
- Primary Roads
- Branch Roads
- Operational Roads
- Recreation Trails & Canoe Routes
- No Hunting or Possession of Firearms

Wildlife Management Units

- Streams
- Lakes & Rivers
- First Nations Reserves
- Patent Land
- Parks and Conservation Reserves
- 2024 Harvest Areas
- Wabigoon Forest Boundary

DISCLAIMER:
 This map should not be relied upon as a precise indicator of routes, as a guide to navigation, to establish legal title, boundary lines or locations of improvements. Dryden Fibre Canada ULC and the Ontario Ministry of Natural Resources shall not be liable in any way for the use of, or reliance upon, this map or any information on this map.

NOTES:
 Planimetric Base Features maintained and provided by the Ontario Ministry of Natural Resources (MNR, July 2017, Forest Information Manual. Toronto: Queen's Printer of Ontario). Transportation and Forest Resources information are from Dryden Fibre Canada ULC company files.

© King's Printer for Ontario 2024
 © Dryden Fibre Canada ULC 2024

AREAS WILL BE CLOSED DURING ACTIVE OPERATIONS ONLY



Wabigoon Forest

ATTENTION HUNTERS
NO HUNTING OR POSSESSION OF FIREARMS AREAS 2024

Please Observe and Obey All Signs
 Cross-hatched Areas in Dryden District
CLOSED DURING ACTIVE OPERATIONS ONLY

ONTARIO GOVERNMENT NOTICE:
 Closures are in effect during the open rifle season (moose / deer) for the respective Wildlife Management Unit during active operations only.

FIREARMS MUST BE ENCASED WHEN TRAVELING THROUGH CROSS-HATCHED AREAS WHEN SIGNS ARE PRESENT

The areas will be clearly signed and hunters are required to obey these signs.

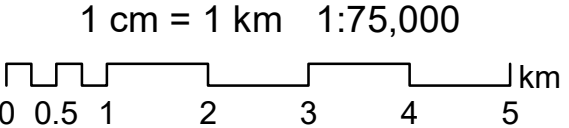
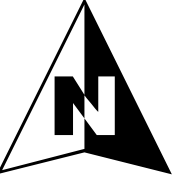
Maps showing potentially closed areas will be available for viewing in the M.N.R. office in Dryden and at major issuers of hunting licenses in the Dryden area as well as at the Dryden Fibre Canada Gatehouse.

All closures are made under the authority of Subsection 10(2) of the Fish and Wildlife Conservation Act, R.S.O. 1997, Chapter 41, for the purposes of safety of woods workers.

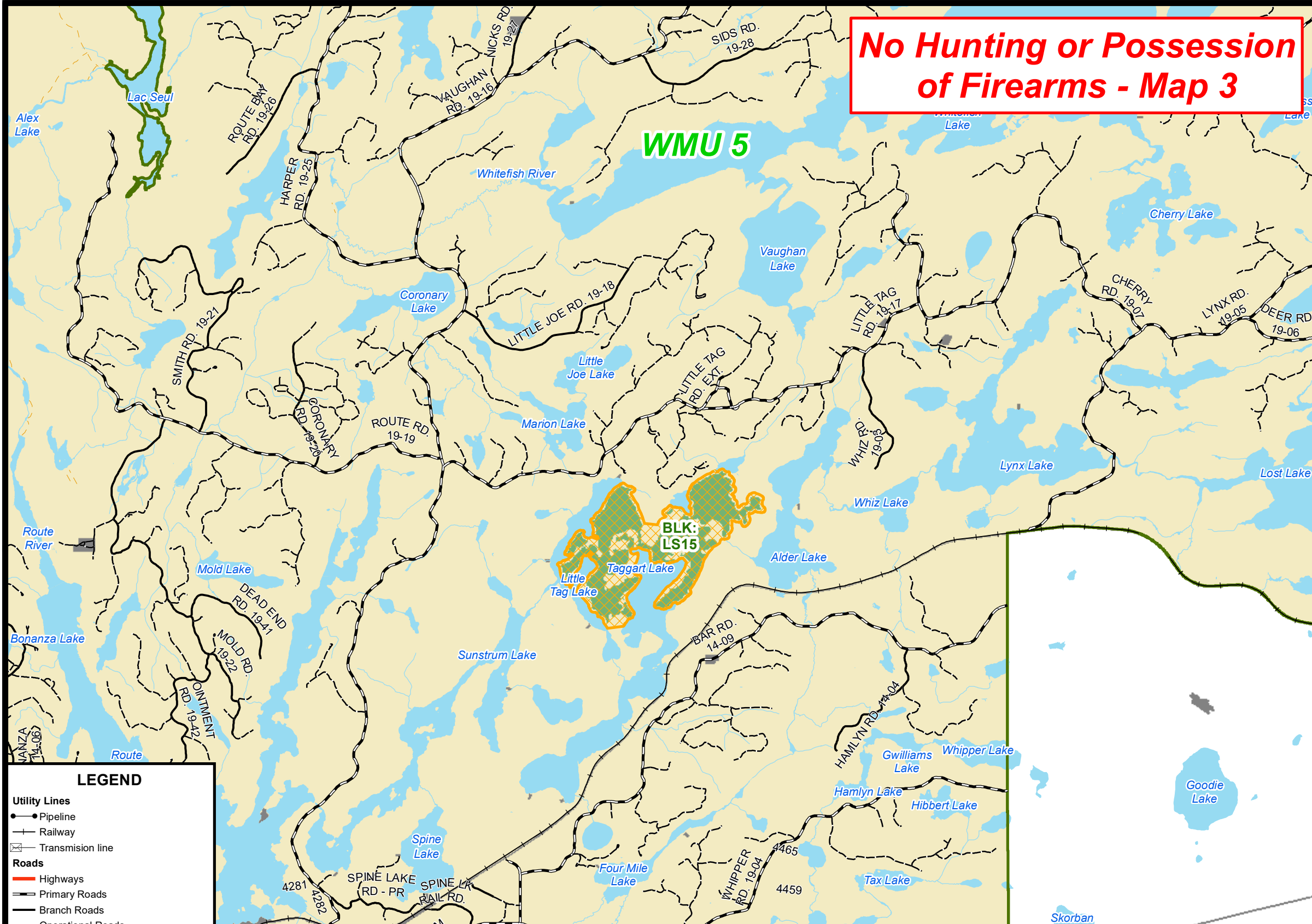
This map is not intended for navigational use

FOR FURTHER INFORMATION CONTACT:

Rob Hoedl Operations Coordinator Dryden Fibre Canada P.O. Box 3001 Dryden, ON P8N 2Z7 Phone (807) 323-3427	Lyla Soley Management Forester Dryden Fibre Canada P.O. Box 3001 Dryden, ON P8N 2Z7 Phone (807) 323-3303
---	---



No Hunting or Possession of Firearms - Map 3



LEGEND

Utility Lines

- Pipeline
- Railway
- Transmission line

Roads

- Highways
- Primary Roads
- Branch Roads
- Operational Roads
- Recreation Trails & Canoe Routes
- No Hunting or Possession of Firearms

Other Features

- Wildlife Management Units
- Streams
- Lakes & Rivers
- First Nations Reserves
- Patent Land
- Parks and Conservation Reserves
- 2024 Harvest Areas
- Wabigoon Forest Boundary

DISCLAIMER:
 This map should not be relied upon as a precise indicator of routes, as a guide to navigation, to establish legal title, boundary lines or locations of improvements. Dryden Fibre Canada ULC and the Ontario Ministry of Natural Resources shall not be liable in any way for the use of, or reliance upon, this map or any information on this map.

NOTES:
 Planimetric Base Features maintained and provided by the Ontario Ministry of Natural Resources (MNR, July 2017, Forest Information Manual. Toronto: Queen's Printer of Ontario). Transportation and Forest Resources information are from Dryden Fibre Canada ULC company files.

© King's Printer for Ontario 2024
 © Dryden Fibre Canada ULC 2024

AREAS WILL BE CLOSED DURING ACTIVE OPERATIONS ONLY



Wabigoon Forest

ATTENTION HUNTERS
NO HUNTING OR POSSESSION OF FIREARMS AREAS 2024
 Please Observe and Obey All Signs
 Cross-hatched Areas in Dryden District
CLOSED DURING ACTIVE OPERATIONS ONLY

ONTARIO GOVERNMENT NOTICE:
 Closures are in effect during the open rifle season (moose / deer) for the respective Wildlife Management Unit during active operations only.

FIREARMS MUST BE ENCASED WHEN TRAVELING THROUGH CROSS-HATCHED AREAS WHEN SIGNS ARE PRESENT

The areas will be clearly signed and hunters are required to obey these signs.

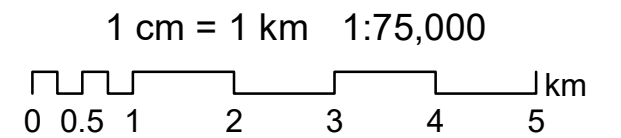
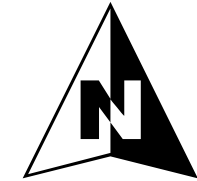
Maps showing potentially closed areas will be available for viewing in the M.N.R. office in Dryden and at major issuers of hunting licenses in the Dryden area as well as at the Dryden Fibre Canada Gatehouse.

All closures are made under the authority of Subsection 10(2) of the Fish and Wildlife Conservation Act, R.S.O. 1997, Chapter 41, for the purposes of safety of woods workers.

This map is not intended for navigational use

FOR FURTHER INFORMATION CONTACT:

Rob Hoedl Operations Coordinator Dryden Fibre Canada P.O. Box 3001 Dryden, ON P8N 2Z7 Phone (807) 323-3427	Lyla Soley Management Forester Dryden Fibre Canada P.O. Box 3001 Dryden, ON P8N 2Z7 Phone (807) 323-3303
---	---



No Hunting or Possession of Firearms - Map 4



Wabigoon Forest

ATTENTION HUNTERS NO HUNTING OR POSSESSION OF FIREARMS AREAS 2024

Please Observe and Obey All Signs
Cross-hatched Areas in Dryden District
CLOSED DURING ACTIVE OPERATIONS ONLY

ONTARIO GOVERNMENT NOTICE:
Closures are in effect during the open rifle season (moose / deer) for the respective Wildlife Management Unit during active operations only.

FIREARMS MUST BE ENCASED WHEN TRAVELING THROUGH CROSS-HATCHED AREAS WHEN SIGNS ARE PRESENT

The areas will be clearly signed and hunters are required to obey these signs.

Maps showing potentially closed areas will be available for viewing in the M.N.R. office in Dryden and at major issuers of hunting licenses in the Dryden area as well as at the Dryden Fibre Canada Gatehouse.

All closures are made under the authority of Subsection 10(2) of the Fish and Wildlife Conservation Act, R.S.O. 1997, Chapter 41, for the purposes of safety of woods workers.

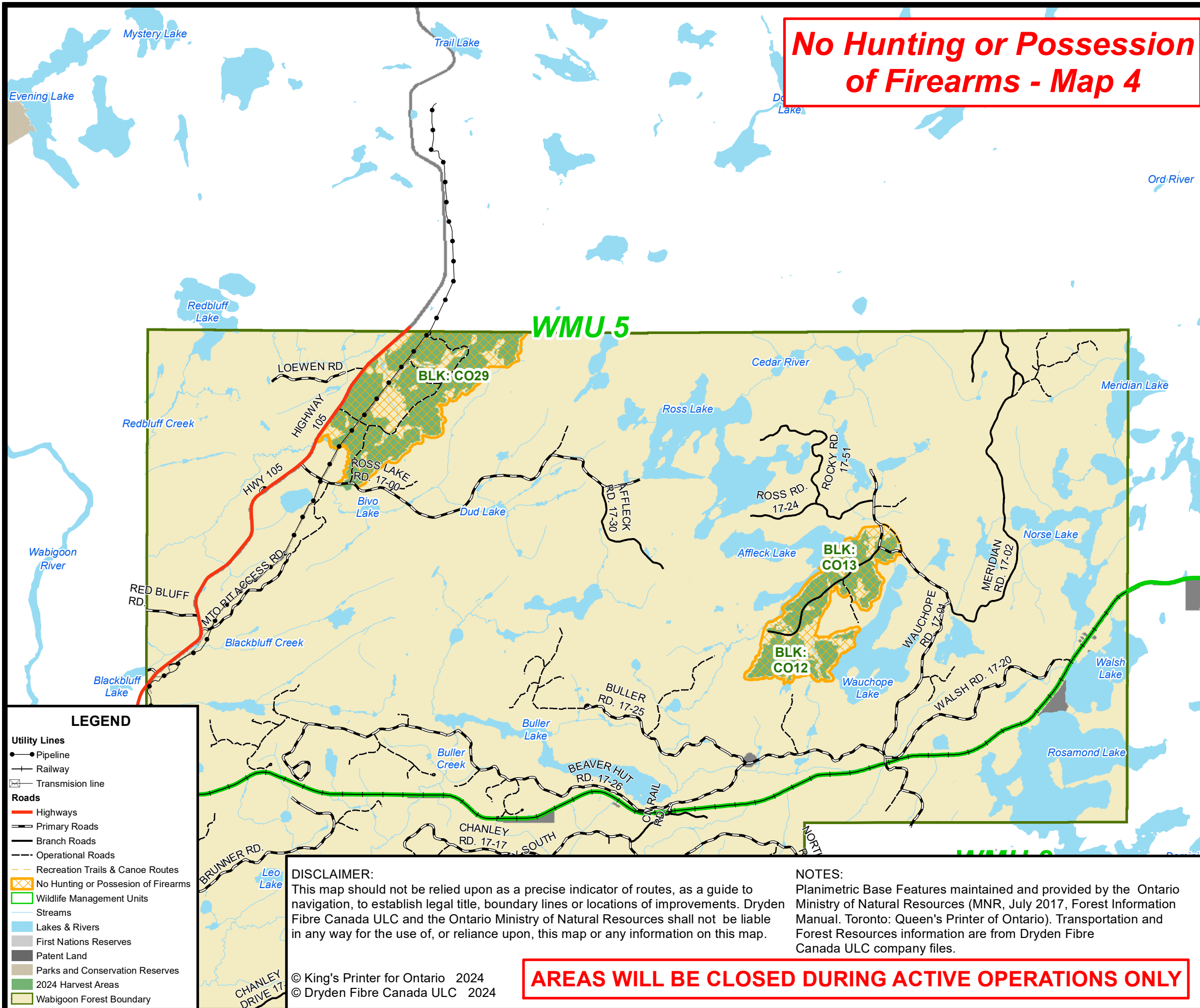
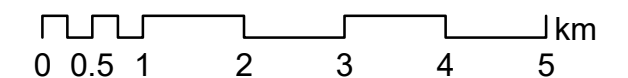
This map is not intended for navigational use

FOR FURTHER INFORMATION CONTACT:

Rob Hoedl Operations Coordinator Dryden Fibre Canada P.O. Box 3001 Dryden, ON P8N 2Z7 Phone (807) 323-3427	Lyla Soley Management Forester Dryden Fibre Canada P.O. Box 3001 Dryden, ON P8N 2Z7 Phone (807) 323-3303
---	---



1 cm = 1 km 1:75,000



DISCLAIMER:
This map should not be relied upon as a precise indicator of routes, as a guide to navigation, to establish legal title, boundary lines or locations of improvements. Dryden Fibre Canada ULC and the Ontario Ministry of Natural Resources shall not be liable in any way for the use of, or reliance upon, this map or any information on this map.

NOTES:
Planimetric Base Features maintained and provided by the Ontario Ministry of Natural Resources (MNR, July 2017, Forest Information Manual. Toronto: Queen's Printer of Ontario). Transportation and Forest Resources information are from Dryden Fibre Canada ULC company files.

© King's Printer for Ontario 2024
© Dryden Fibre Canada ULC 2024

AREAS WILL BE CLOSED DURING ACTIVE OPERATIONS ONLY